

Land Available:  
+/- 1 Acre Corner Lot  
N Hwy 17 in Mt. Pleasant



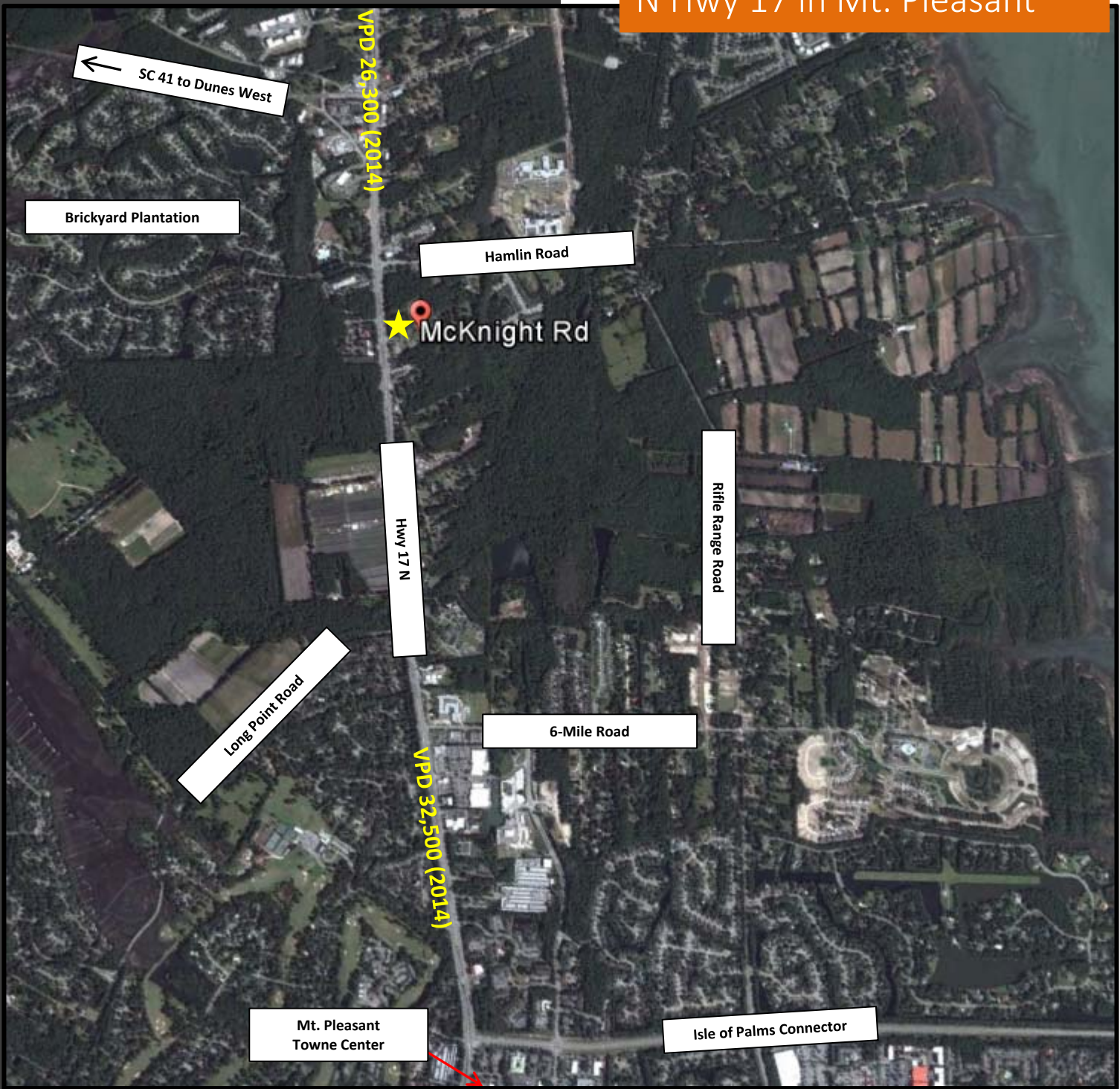
**Property Features:**

- Approximately 1 acre of land
- Corner lot of Highway 17 N and McKnight Road
- Within Town of Mt. Pleasant city limits - Sweetgrass Basket Overlay District
- Zoning: Office Professional
- Sale Price: \$850,000
- 2.3 miles to Isle of Palms Connector / Mt. Pleasant Towne Center



For information please contact:  
**Will Batson**  
(M) 803-309-7334 (O) 803-256-5299  
[wbatson@ddincorp.com](mailto:watson@ddincorp.com)

Land Available:  
+/- 1 Acre Corner Lot  
N Hwy 17 in Mt. Pleasant



2015 Demographics

	1 mile	3 miles	5 miles
Population	2,103	30,022	69,433
Households	827	12,269	28,017
Average HH Income	\$115,106	\$108,010	\$113,273

*Hwy 17 N at McKnight Road*  
Mt. Pleasant, SC 29466



For information please contact:  
**Will Batson**  
(M) 803-309-7334 (O) 803-256-5299  
[wbatson@ddincorp.com](mailto:watson@ddincorp.com)